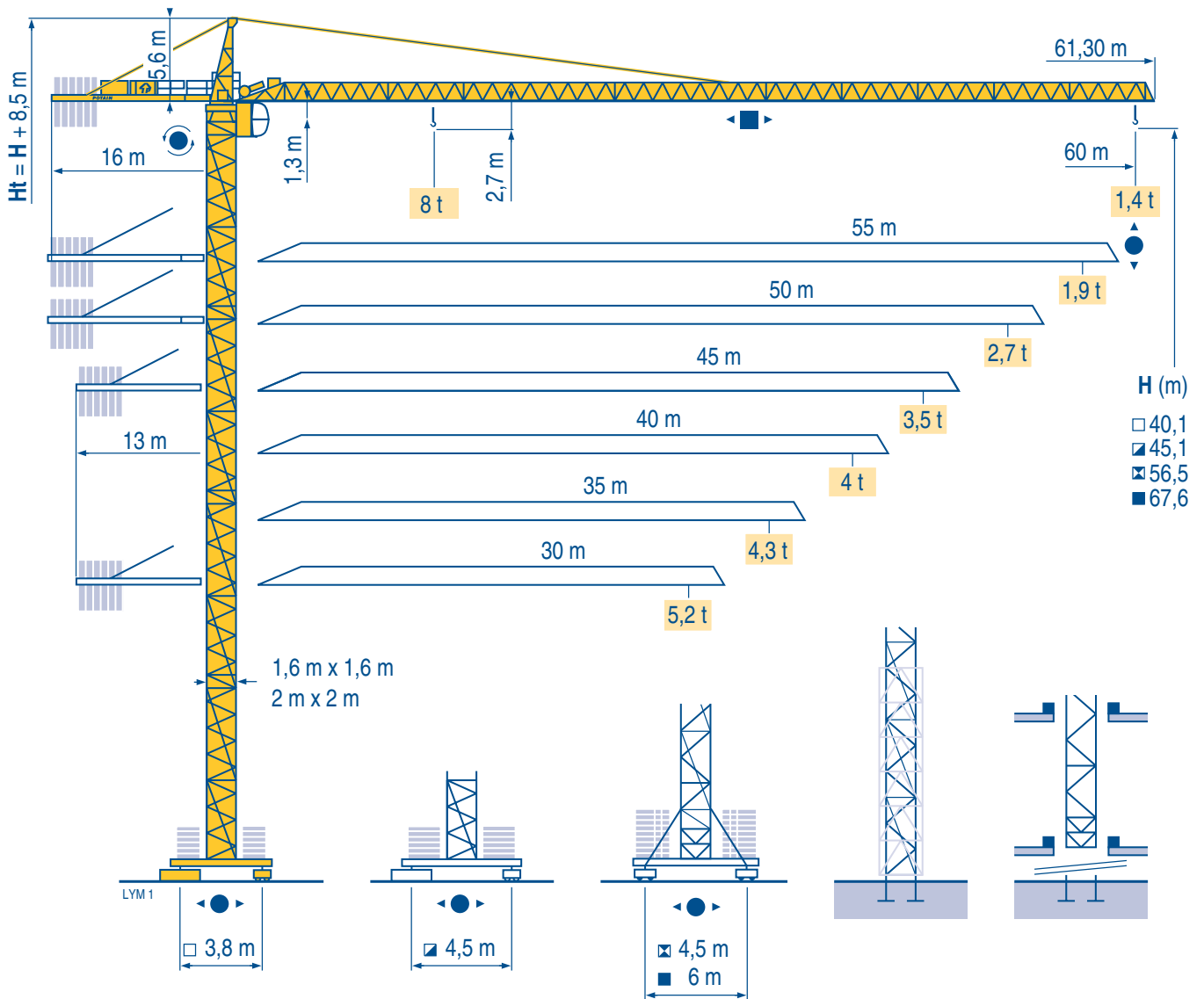


MD 175 B

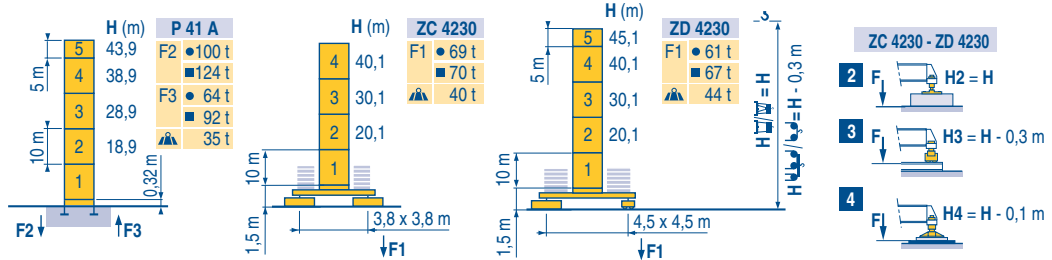


CITY CRANE

CE FEM 1.001-A3

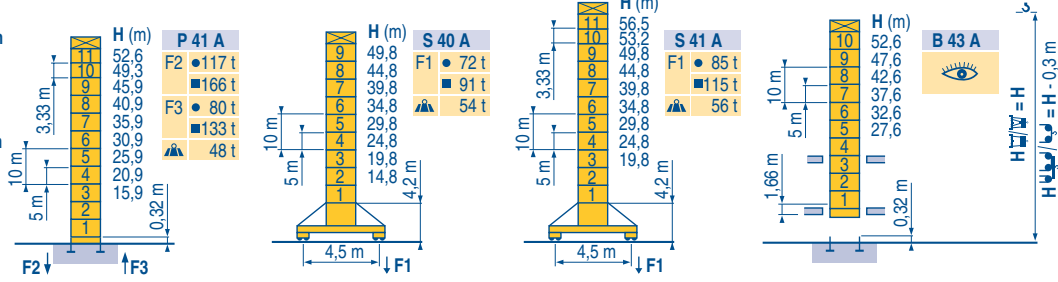
Mat / Réactions City 1,6 m

Maste /
Eckdrücke
Masts /
Reactions
Mástil /
Reacciones
Torre / Reazioni
Tramo /
Reações

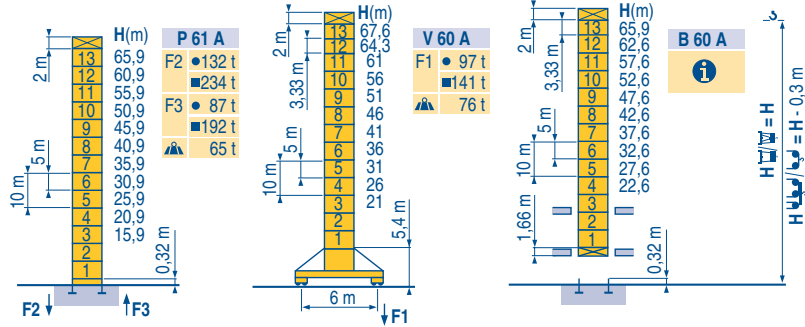


LVM 1

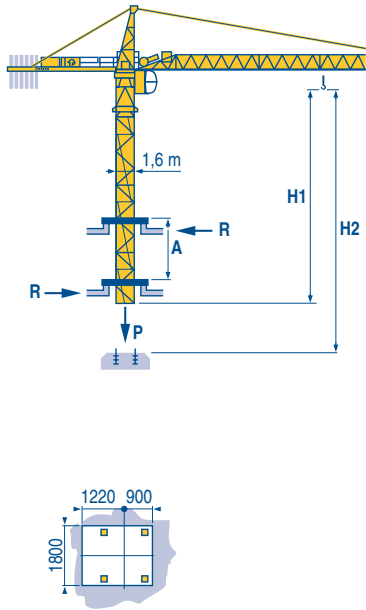
Télescopable 1,6 m
Teleskopierbar 1,6 m
Telescopic 1,6 m
Telescopico 1,6 m
Telescopagem 1,6 m



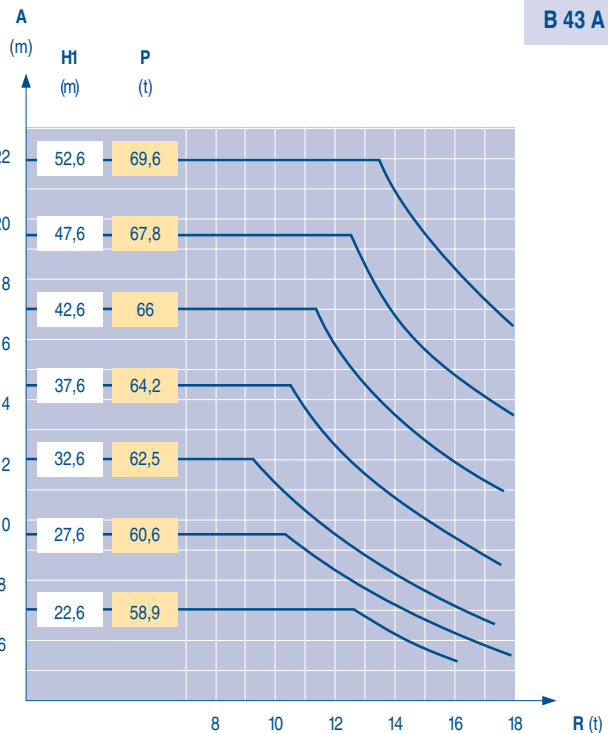
Télescopable 2 m
Teleskopierbar 2 m
Telescopic 2 m
Telescopico 2 m
Telescopagem 2 m



Télescopage sur dalles
Kletterkrane im Gebäude
Climbing crane
Telescopage gruas trepadoras
Gru in cavedio
Telescopagem sobre lajes



LVM 1



CITY CRANE
MD 175 B



F	D	GB	E	I	P
●	●	●	●	●	●
■	■	■	■	■	■
▲	▲	▲	▲	▲	▲
i					
Réactions en service	Reaktionskräfte in Betrieb	Reactions in service	Reacciones en servicio	Reazioni in servizio	Reações em serviço
Réactions hors service	Reaktionskräfte außer Betrieb	Reactions out of service	Reacciones fuera de servicio	Reazioni fuori servizio	Reações fora de serviço
A vide sans lest (ni train de transport) avec flèche et hauteur maximum.	Ohne Last, Ballast (und Transportachse), mit Maximalausleger und Maximalhöhe.	Without load, ballast (or transport axes), with maximum jib and maximum height.	Sin carga, sin lastre, (ni tren de transporte), flecha y altura máxima.	A vuoto, senza zavorra (ne assali di trasporto) con braccio massimo e altezza massima.	Sem carga (nem trem de transporte) sem lastro com lança e altura máximas.
Nous consulter	Auf Anfrage	Consult us	Consultarnos	Consultateci	Consultar-nos

Courbes de charges

Lastkurven

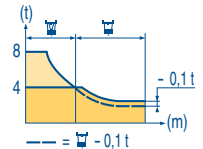
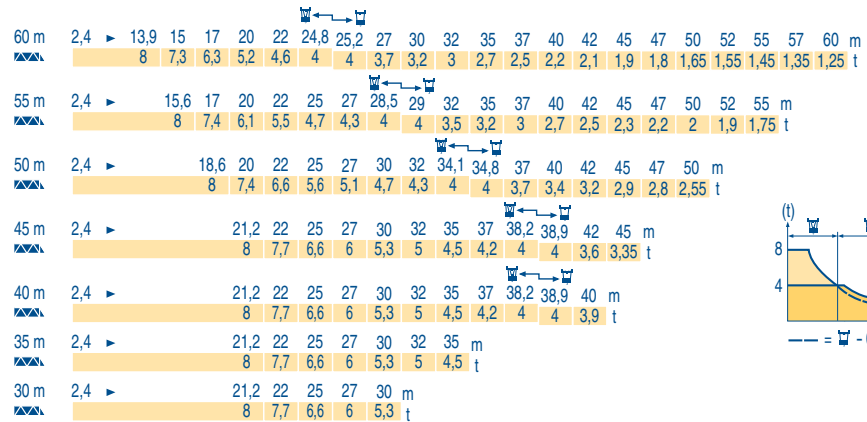
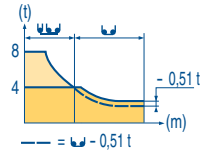
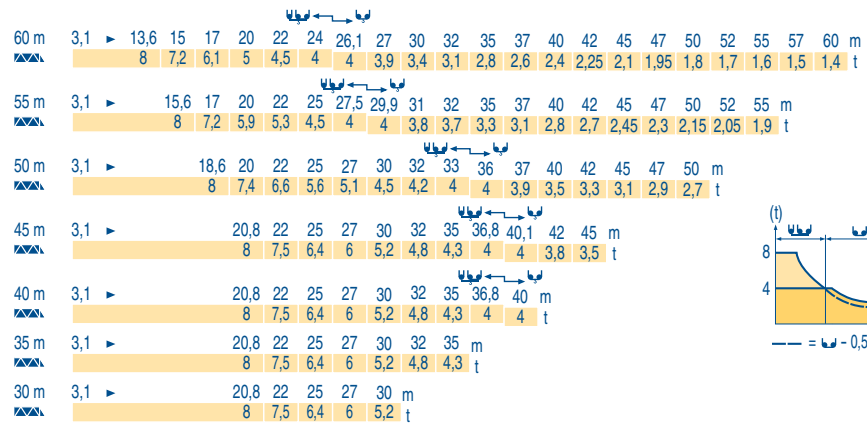
Load diagrams

Curvas de cargas

Curve di carico

Curva de cargas

LVM 1



Lest de contre-flèche

Gegenauslegerballast

Counter-jib ballast

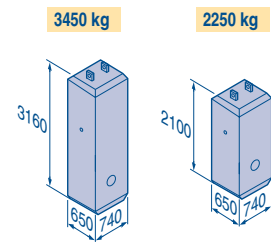
Lastre de contra flecha

Contrappeso

Lastros da contra lança

LVM 1

Crane Length	Counter-jib Length	3450 kg	2250 kg	▲ (kg)
60 m	16 m	4	2	18 300
55 m	16 m	3	3	17 100
50 m	16 m	3	2	14 850
45 m	13 m	5	1	19 500
40 m	13 m	4	2	18 300
35 m	13 m	3	3	17 100
30 m	13 m	3	2	14 850



Lest de base

Grundballast

Base ballast

Lastre de base

Zavorra di base

Lastros da base

LVM 1

Crane Length	Model	H (m)	H (m)									
			▲ (t)	▲ (t)	▲ (t)	▲ (t)						
1,6 m	ZC 4230 - ●	40,1	30,1	20,1								
		80	80	80								
1,6 m	ZD 4230 - ●	45,1	40,1	30,1	20,1							
		60	50	50	50							
1,6 m	S 40 A - ●	49,8	44,8	39,8	34,8	29,8	24,8	19,8				
		72	54	54	54	48	48	48				
1,6 m	S 41 A - ●	56,5	53,2	49,8	44,8	39,8	34,8	29,8	24,8	19,8		
		102	84	72	60	54	54	48	48	48		
2 m	V 60 A - ●	67,6	64,3	61	56	51	46	41	36	31	26	21
		132	108	96	72	48	36	24	24	24	24	24

CITY CRANE MD 175 B



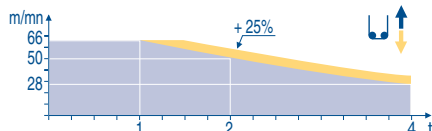
	F	D	GB	E	I	P
A	Distance entre cadres	Abstand zwischen den Rahmen	Distance between collars	Distancia entra marcos	Distanza fra i telai	Distância entre quadros
H1	Hauteur grue	Kranhöhe	Crane height	Altura grúa	Altezza gru	Altura da grua
P	Poids de la grue(en service)	Krangewicht (in Betrieb)	Crane weight (in service)	Peso de la grúa (en servicio)	Peso della gru (in servizio)	Peso da grua (em serviço)
R	Réaction horizontale	Horizontalkräfte	Horizontal reaction	Reaccion horizontal	Reazione orizzontale	Reacção horizontal
	Voir télescope sur dalles	Siehe Kletterkrane im Gebäude	See climbing crane	Veja grua trepadora	Consultare gru in cavedio	Ver telescopagem sobre lages

Mécanismes
Antriebe
Mechanisms
Mecanismos
Meccanismi
Mecanismos

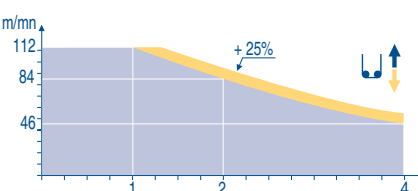
LYM 1

		↕					↕↕					ch - PS hp	kW			
↕	33 LVF 20 Optima	m/min	2,2 → 8,8 → 28 → 36 → 50 → 66					1,1 → 4,4 → 14 → 18 → 25 → 33					30	22	290 m	
		t	4 4 4 3 2 1					8 8 8 6 4 2								
↔	5 D3 V4	m/min	15 - 30 - 58										5	3,7		
↕	50 LVF 20 Optima	m/min	3,8 → 14,8 → 46 → 58 → 84 → 112					1,9 → 7,4 → 23 → 29 → 42 → 56					50	37	363 m	
		t	4 4 4 3 2 1					8 8 8 6 4 2								
↔	6 DVF 4	m/min	0-6 → 76										5,5	4		
	RCV 145	tr/min U/min rpm	0 → 0,8										2 x 6	2 x 4,4		
	ZC 4230 ZD 4230	RT 324	m/min	12,5 - 25										2 x 7	2 x 5,2	
	S 40 A	RT 324 R ≥ 10 m	m/min	12,5 - 25										2 x 7	2 x 5,2	
	S 41 A	RT 443 A1 2V R ≥ 10 m	m/min	15 - 30										4 x 5	4 x 3,7	
	V 60 A	RT 544 A1 2V R ≥ 13 m	m/min	13,5 - 27										4 x 7	4 x 5,2	
CEI 38		IEC 38	kVA													
400 V (+6% -10%) 50 Hz			33 LVF : 50 kVA 50 LVF : 70 kVA					2000/14								

33 LVF 20
Optima



50 LVF 20
Optima



F

Levage
Distribution
Orientation
Translation
Conforme aux directives CEE sur le niveau acoustique

D

Heben
Katzfahren
Schwenken
Kranfahren
Gemäss EWG-Richtlinien für den Schall-Leistungspegel

GB

Hoisting
Trolleying
Slewing
Travelling
In compliance with the EEC Instructions on noise level

E

Elevación
Distribución
Orientación
Traslación
Conforme con las directivas CEE sobre el nivel acústico

I

Sollevamento
Distribuzione
Rotazione
Traslazione
Conforme alle direttive CEE sul livello acustico

P

Elevação
Distribuição
Rotação
Translação
Conforme as directivas CEE sobre o nível acústico



Document commercial non contractuel. Pour toute information technique se référer à la notice correspondante

Unverbindliches Vertriebsdokument. Für technische Informationen, siehe die entsprechenden Anweisungen.

This commercial document is not legally binding. For any technical information, please refer to the corresponding instructions.

Documento comercial no contractual. Para cualquier información técnica, ver la noticia correspondiente.

Documento commerciale non vincolante, per tutte le informazioni tecniche fare riferimento al catalogo istruzioni

Documento comercial não contractual. Para qualquer informação técnica complementar consultar as respectivas instruções

Manitowoc
Crane CARE

POTAIN
Manitowoc Crane Group



Americas

Tel: +1 920 683 6322
Tel: +1 717 597 8121

Europe - Middle East - Africa

Tel: +(33) 4 72 81 50 00
Tel: +(44) 191 565 6281

Asia - Pacific

Tel: +(65) 6861 7133
Fax: +(65) 6862 4142

www.manitowoccrane.com

18, rue de Charbonnières - B.P.173
69132 ECULLY Cedex - France

Tél. : (33) 4 72 18 20 20
Fax. : (33) 4 72 18 20 00
www.manitowoccrane.com www.potain.com

CITY CRANE MD 175 B

Réf. 2003 48 LYM 1

Copyright.Reproduction interdite © POTAIN 2003

Réalisation HeadLines